

The Covenant of Mayors : monitoring the results



Elodie Bossio

Covenant of Mayors Office / FEDARENE

Bilbao, October 16, 2014



An unprecedented success...

... **6,176** signatories



... **180 million** citizens

1/3 of EU population living in a city with sustainable energy commitments

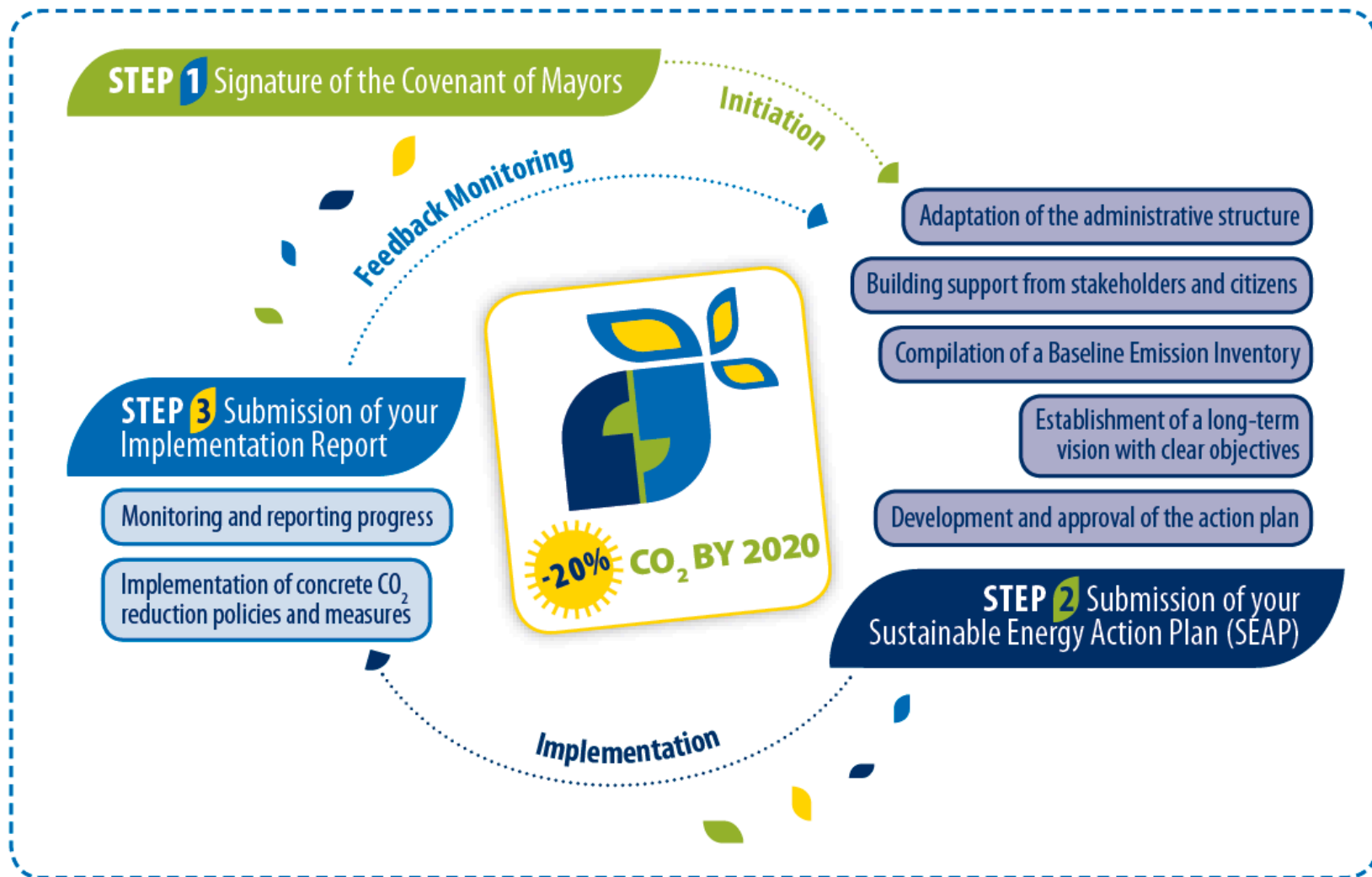
... **3,996** Sustainable Energy Action Plans adopted



... about **30%** CO₂ emissions reduction commitment



The Covenant Commitments





www.eumayors.eu

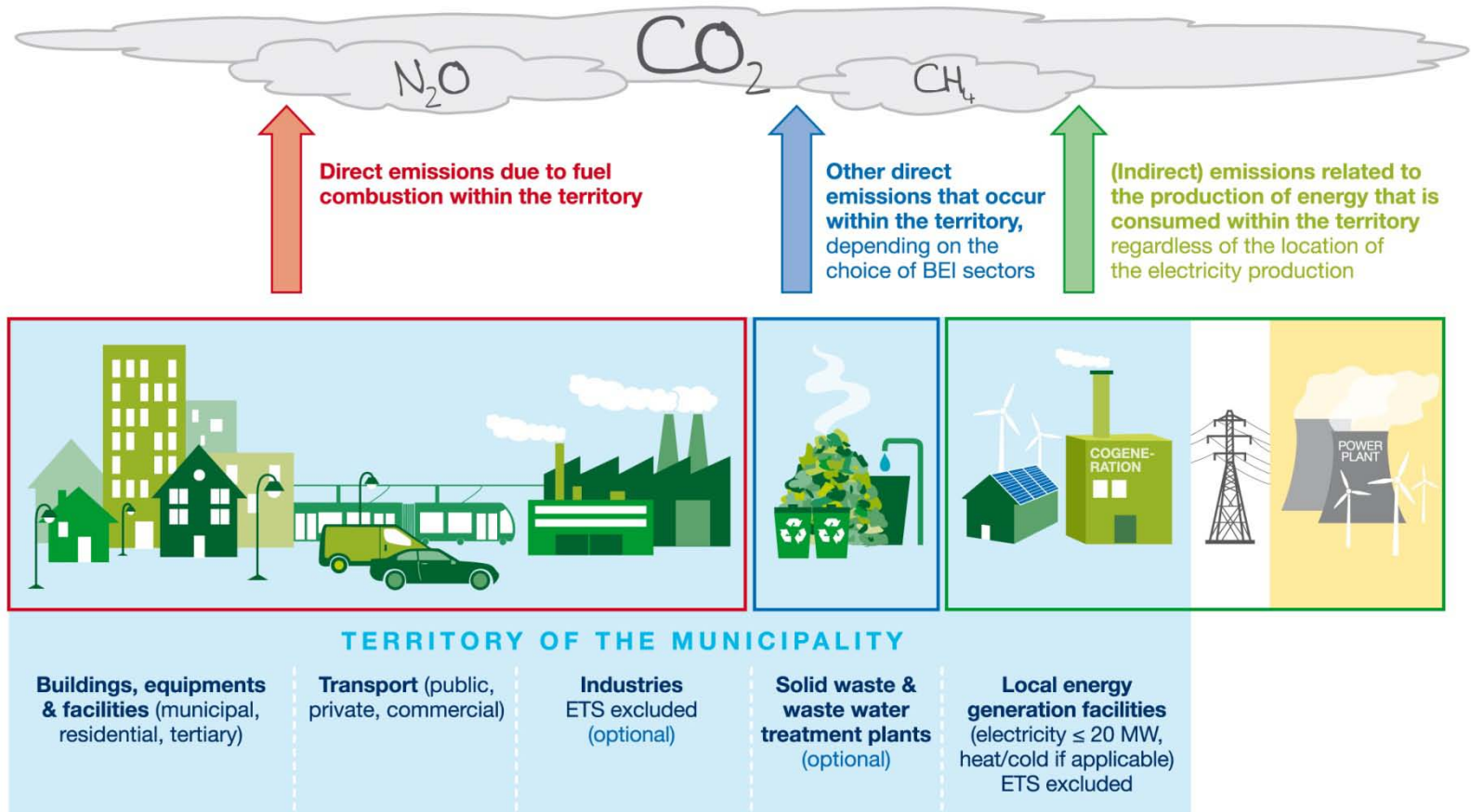


The methodological framework





An integrated approach





Underlying Principles

Integrated approach

Mid/long-term planning

Stakeholders' involvement

-20% CO₂ by 2020 EU target

Fields of competence of local authorities



Flexible choice of models/tools respecting the Principles

Better fitting to local circumstances and permitting those already engaged in energy planning to come on board!



The common reporting framework





The SEAP Template

- Standard **reporting framework** for Covenant Signatories;
- **Summarises** the key data of SEAPs;
- Allows to **analyse the data** in a structured and systematic manner;
- Ensures the generation of aggregated **statistics**¹.

Category	FINAL ENERGY CONSUMPTION [MWh]															
	Electricity	Heat cold	Fossil Fuels								Renewable energies					Total
			Natural gas	Liquid gas	Heating oil	Diesel	Gasoline	Lignite	Coal	Other fossil fuels	Plant oil	Biofuel	Other biomass	Solar thermal	Geothermal	
BUILDINGS, EQUIPMENT / FACILITIES & INDUSTRIES																
Municipal buildings, equipment/facilities	115844	0	210214	0	12990	47795	0	0	0	0	0	0	0	113	0	386956
Tertiary (non municipal) buildings, equipment/facilities	690854	0	1189323	70772	138311	54575	0	0	0	0	0	0	32	0	0	2143868
Residential buildings	670036	0	2611078	11730	0	357202	0	0	0	0	0	0	3736	0	0	3653783
Public lighting	37800	0	0	0	0	0	0	0	0	0	0	0	0	0	0	37800
Industries (excluding industries involved in the EU Emission trading scheme - ETS)	0	0	0	0	0	0	0	0	0	0	0	0	0	0	0	0
Subtotal	1514534	0	4010615	82502	151301	459572	0	0	0	0	0	0	3768	113	0	6222407
TRANSPORT																
Municipal fleet	0	0	0	0	0	30676	6618	0	0	0	0	0	0	0	0	37294
Public transport	14222	0	179	0	0	96603	269	0	0	0	0	0	0	0	0	111273
Private and commercial transport	0	0	0	0	0	200000	1505628	0	0	0	0	0	0	0	0	1705628
Subtotal	14222	0	179	0	0	327279	1512515	0	0	0	0	0	0	0	0	1854195
TOTAL	1528756	0	4010794	82502	151301	786851	1512515	0	0	0	0	0	3768	113	0	8076602

¹ e.g. JRC report [‘The Covenant of Mayors in Figures 5-Year Assessment’](#) (2013); [Covenant Indicators](#) (2013).



What is reported?

- **Overall strategy** (target, vision, staff, budget, etc.);
- **Final energy consumption** by sector and by energy carrier;
- **CO₂ emissions factors** adopted for each energy carrier;
- **Local energy production** (if applicable);
- **CO₂ emissions** by sector and by energy carrier;
- **Key actions** (estimates on implementation cost, energy savings, renewable energy production and CO₂ emissions reduction by 2020).





Revised SEAP template

Summer
2014

- ✓ More **user-friendly** reporting interface;
- ✓ **Real-time notifications** on errors and any missing data;
- ✓ Automatic computation of totals and CO₂ emissions data;
- ✓ Automatic generation of a **synthesis report** of the data provided;
- ✓ **Real-time feedback** at the submission stage (automatic JRC checks and notifications).



Revised SEAP template

Summer
2014

- **2 Key Documents**

- ✓ Revised SEAP template : [Library](#)
- ✓ SEAP migration quick guide: [Library](#)



New Monitoring template

Part 1: My overall strategy

- ✓ **Pre-filled** (but editable) with data from the SEAP template

Part 2: My Emission Inventories

- ✓ MEI = BEI

Part 3: My Sustainable Energy Action Plan

- ✓ **Pre-filled** (but editable) with data from the SEAP template

- ✓ Pdf version available in the [Library](#)
- ✓ No approval from the city council required
- ✓ No evaluation by JRC



New Monitoring template



- ✓ **Every 2 years** – qualitative action reporting
- ✓ **Every 4 years** – quantitative action reporting with a Monitoring Emission Inventory

**Part 1: My
overall strategy**

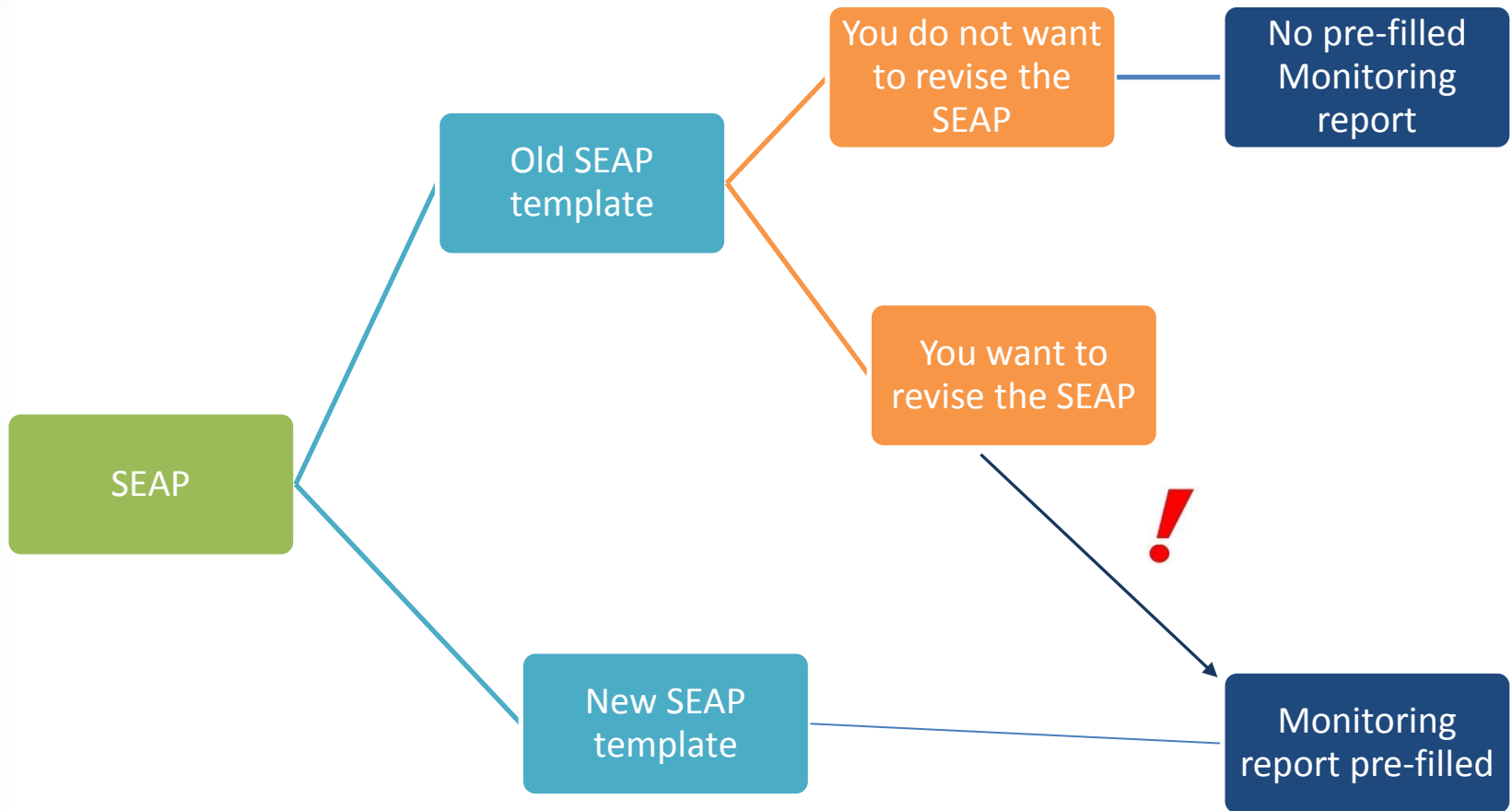
**Part 2: My
Emission
Inventories**

**Part 3: My
Sustainable
Energy Action
Plan**





Do I need to re-submit my SEAP?

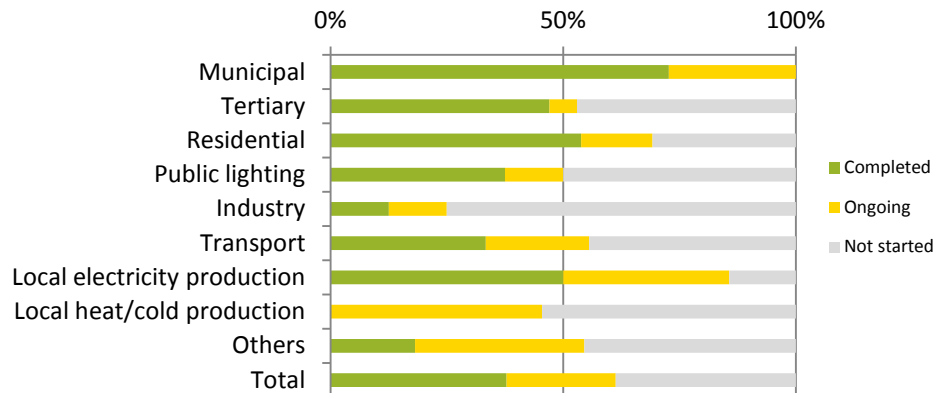
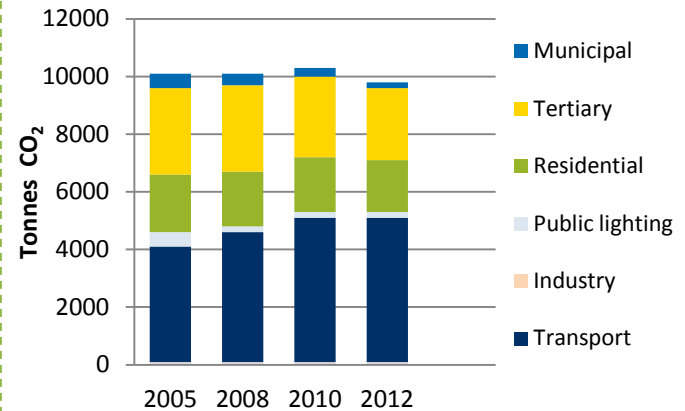
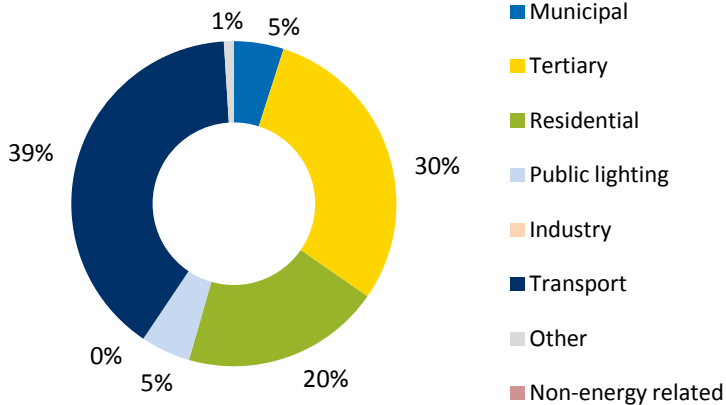




By the end of the year

- **The SEAP and Monitoring online Catalogue**
 - ✓ On-time publishing after submitting the template

End
2014





What will be new in 2015 – 2016 ?



- **Database for technical materials**
 - ✓ Available in the extranet
 - ✓ Uploaded by the CoM community (in national language)
 - ✓ Improved exchange of experience

- **Better recognition of important stakeholders**
 - ✓ Local and Regional Energy Agencies
 - ✓ Universities
 - ✓ Citizens

- **More capacity-building events, more webinars**





www.eumayors.eu



THANK YOU!

elodie.bossio@eumayors.eu



www.eumayors.eu



The Covenant of Mayors : recent development and perspectives



Elodie Bossio
Covenant of Mayors Office

Genova 26th March 2014



Recent developments

- **Joint SEAPs - For neighbouring small municipalities**
 - ✓ facilitate the exchange of experiences, the collection of data, coordinate the efforts of **municipalities**;
 - ✓ pool skills and resources together for technical support.
 - ✓ **identify actions that could be eligible for funding**



Joint SEAP



Covenant Step:	Joint SEAP Option 1:	Joint SEAP Option 2:
20% CO ₂ reduction target:	Individual target	Shared target
Submission of the SEAP template:	Individual 1 BEI per signatory 1 SEAP document with results of their respective BEIs and a set of both individual and common actions..	1 for the group 1 Common BEI 1 SEAP document with results of the common BEI and a set of actions to be undertaken by the group
SEAP document	>> 1 joint SEAP <<	
Publication of the results	1 per Signatory	1 for the group





Grouped SEAP analysis

- ✓ SEAPs developed by CTCs often have common characteristics
- ✓ BEIs are established and based on common data sources and approach.
- ✓ Common key areas of action.
- ✓ The estimates on forecasted energy savings related to the actions are calculated in a consistent way

- ✓ **JRC analyses in details the methodology and the representative SEAP and provides the feedback report to CTC**



Grouped SEAP analysis

- ✓ Faster and more detailed analysis
- ✓ Easier identification of any criticalities for the methodology adapted
- ✓ Detailed feedback received in shorter time
- ✓ Applicable to future SEAPs under preparation



Grouped SEAP analysis



- For the municipalities >50000 people the SEAP will be analysed on a one to one basis by JRC.
- CTCs will group their SEAPs based on the population but also other characteristics, such as:
 - geographical and territorial conditions
 - existence of industrial, agricultural, protected green areas etc...
- For each group, the CTC identifies and communicates a representative plan to JRC.
- The CTC provides JRC with a detailed description of the methodology adopted to develop the SEAPs





Grouped SEAP analysis

JRC

- JRC analyses in details the methodology and the representative SEAP and provides the feedback report to CTC.
- In order to support the CTC, JRC performs an automatic analysis of the data inserted in the on-line template in order to identify any possible errors occurred whilst filling in the template.
- Based on the outcome of the analysis performed on the methodology and the representative SEAP, JRC will accept/reject all the related SEAPs.



Grouped SEAP analysis

Follow-up: JRC/CTC

- CTC will **distribute and follow-up** the feedback on the representative SEAP and the methodology **to all the SEAPs** it coordinates.
- Subsequently, JRC will organize a **(follow-up meeting)** with some of the CTCs' representatives to discuss the issues raised in the feedback report and the solutions identified by the Coordinator.



www.eumayors.eu



Perspectives





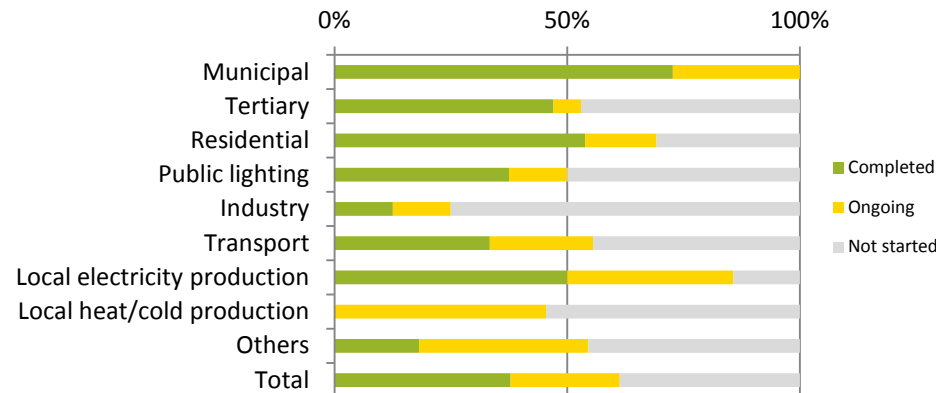
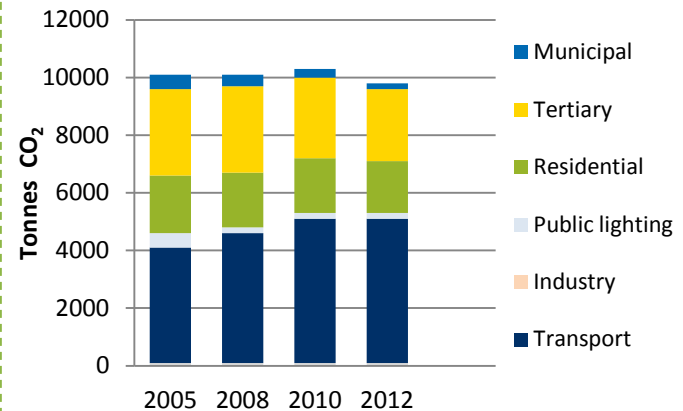
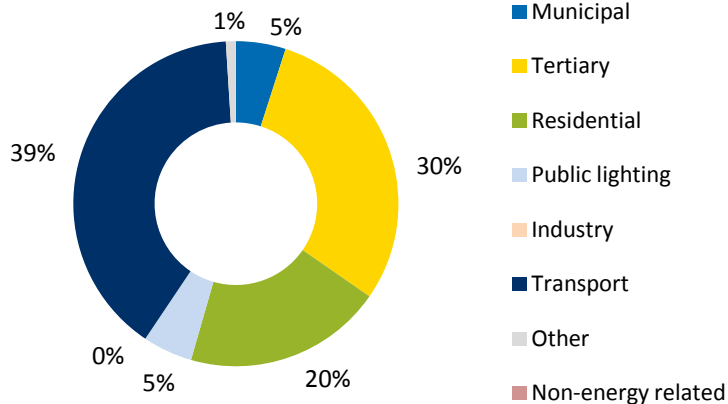
What is new in 2014?

- **The revised SEAP template & new Monitoring template**
 - ✓ More user-friendly reporting interface;
 - ✓ Real-time notifications on errors and any missing data;
 - ✓ Automatic computation of totals and CO₂ emissions data;
 - ✓ Automatic generation of a synthesis report of the data provided;
 - ✓ Real-time feedback at the submission stage (automatic JRC checks and notifications).



What will be new in 2014?

- **The SEAP and Monitoring online Catalogue**
 - ✓ On-time publishing after submitting the template





What will be new in 2014?

- **The Benchmarks of Excellence catalogue**
 - ✓ Improvement of the search engine (categories)
 - ✓ Introduction of financial figures
 - ✓ More lively section featuring Top monthly BoEs

BEÁGUEDA - THE ELECTRICAL BICYCLE OF ÁGUEDA FOR FREE PUBLIC USE



Sector: Land use planning
Implementation timeframe: 2010 - 2020
Responsible body: CMÁGueda/Private

Description:
BeÁgueda is based on SD commitments (CoM/LA21) and implemented in phases so that corresponds to citizens mobility needs: is assessed and re-evaluated based on surveys, usage and evaluation by end-users. It represents an investment in 10 e-bikes, parking and securing stands, a central station (microgeneration panel), monitoring/management system that communicates through WIMAX. beAgueda has already 160 users/more than 4000 usages/20000km in e-bike. Despite the early stage, the project was awarded by the Energy Cities as an innovative initiative that promotes CO2 reduction. For the future, an innovative tracking /monitoring system is being developed by BikeEmotion (UAveiro, private companies), allowing to track, in real time, the e-bike. The APP, allows any user with Smartphone or technology able to go on-line to find each e-bike is available, where it is, the charge, and book it


KEY FIGURES

- CO₂ reduction : 31 CO₂ eq./a
- Energy savings: 9 MWh/a
- Renewable energy produced: 1 MWh/a
- Implementation cost: 22000 €
- In 2 years travelled: 20000 km

Financing sources: Local Authority's own resources, EU Funds & Programmes, Public-Private Partnerships

[External link](#) [Video](#)

LOW ENERGY RENOVATION AT KATJAS GATA 119, BACKA RÖD, GÖTEBORG



Sector: Buildings, equipment / facilities & industries
Implementation timeframe: 2009 - 2009
Responsible body: Förvaltnings AB Framtiden (housingcompany)

Description:
Katjas Gata 119, in Backa Röd, is a 4-storey residential building with 16 rental apartments. It was built in 1971 as a part of the Swedish "million program". The objective with the energy renovation at Katjas Gata 119 was to reduce the energy use from 178 kWh/m² (Atemp) to approx. 60 kWh/m² and to give us knowledge about technical and economical problems and solutions and experiences from the clients point of view. After the renovation the building energy consumption is between 50-60 kWh/m² Atemp, year 2010-2012, which meets the objectives. The energy renovation resulted in better indoor climate compare to a normal renovation and the client are very satisfied with their living. The project didn't meet the city's demand on return of investment. To get a cost-effective project the building must be in need of renovation and preferably create more lettable area while renovating.

KEY FIGURES

- CO₂ reduction : 16 t CO₂a
- Energy savings: 160 MWh/a

Financing sources: Local Authority's own resources

[External link](#)



What will be new in 2014 – 2016 ?



- **Database for technical materials**
 - ✓ Available in the extranet
 - ✓ Uploaded by the CoM community (in national language)
 - ✓ Improved exchange of experience

- **Better recognition of important stakeholders**
 - ✓ LAREAs
 - ✓ Universities
 - ✓ Associated Partners
 - ✓ Citizens

- **More capacity-building events, more webinars**





5-years of Covenant of Mayors

- Huge mobilisation of local authorities accross EU and beyond **[6,000 signatories]**
- Tipping point in local energy planning **[3,500 integrated plans]**
- More ambitious targets than EU CO₂ emissions reduction target **[30% by 2020]**
- Great proximity of local authorities to EU **[Europeanisation]**
- Reference bottom-up initiative in energy and climate action



Covenant of Mayors success needs to be taken into account in EU policy-making and support continued.



THANK YOU!

elodie.bossio@eumayors.eu



www.eumayors.eu

